



Circular No.: IEX/MO/314/2019

Date: 5th January, 2019

Implementation of unified version in DAM-TAM-REC-ESCERTS System

Dear Members,

In pursuance of Rules, Bye-Laws and Business Rules of the Exchange, the Members of the Exchange are notified as under:-

Exchange is launching **one single Unified (MAT & TWS) system which would be common for Day Ahead Market (DAM), Term Ahead Market (TAM) and REC segments in live environment from trading date 8th of January, 2019.**

Members may kindly note that this is a compulsory download version. Members may also note that there is no change in the current features available today like placing of single and block bids, uploading of bids, reports available in the system etc. There is no change in the matching algorithm also there are no changes in the login & bidding procedures. Further, in order to smoothly transit to the new version, all Members are requested to download the new version kept in "Member Common" folder at SFTP, which will be open from **11:00 pm onwards (post closure of TAM market) on 7th of January, 2019** and start logging into their new unified MAT & TWS system. Exchange will be emailing passwords for the first time login to unified version of MAT & TWS to members separately.

Members can call IEX Customer Support number 011-43004054/42 for more Clarification or information that might be needed during this period.

For and on Behalf of Indian Energy Exchange Limited

Akhilesh Awasthy

Director (Market Operations)

Annexure I

IEX Trading application Installation Steps for Unified Live Trading

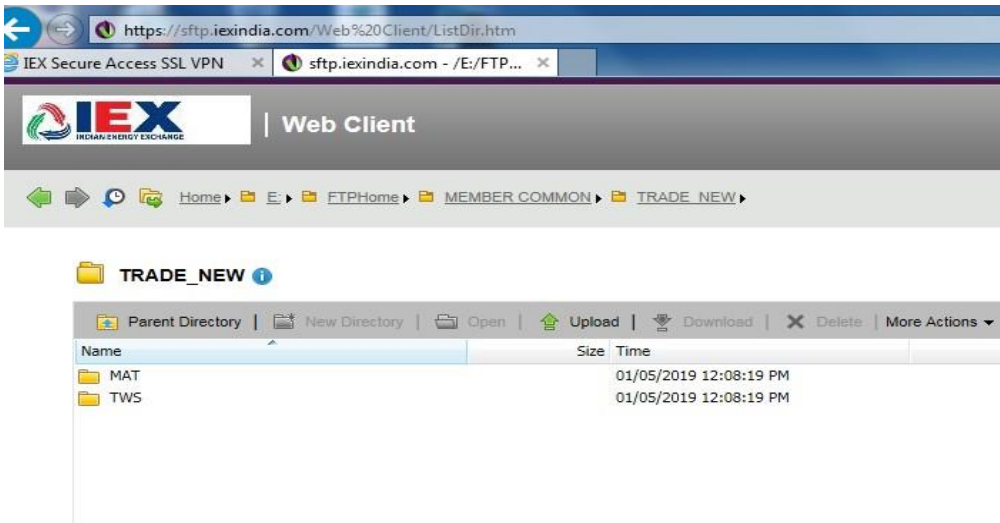
Step1: Downloading software from below sftp link.

'<https://sftp.iexindia.com/>' & download TWS/MAT setup from '**MEMBER COMMON /TRADE_ NEW**' folder.

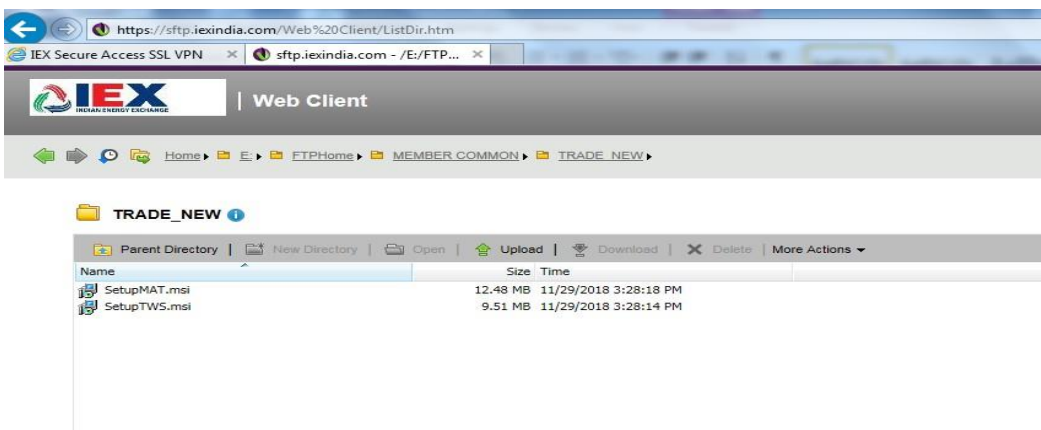
Please enter existing 'sftp' user name and password for Trade Setup downloading.



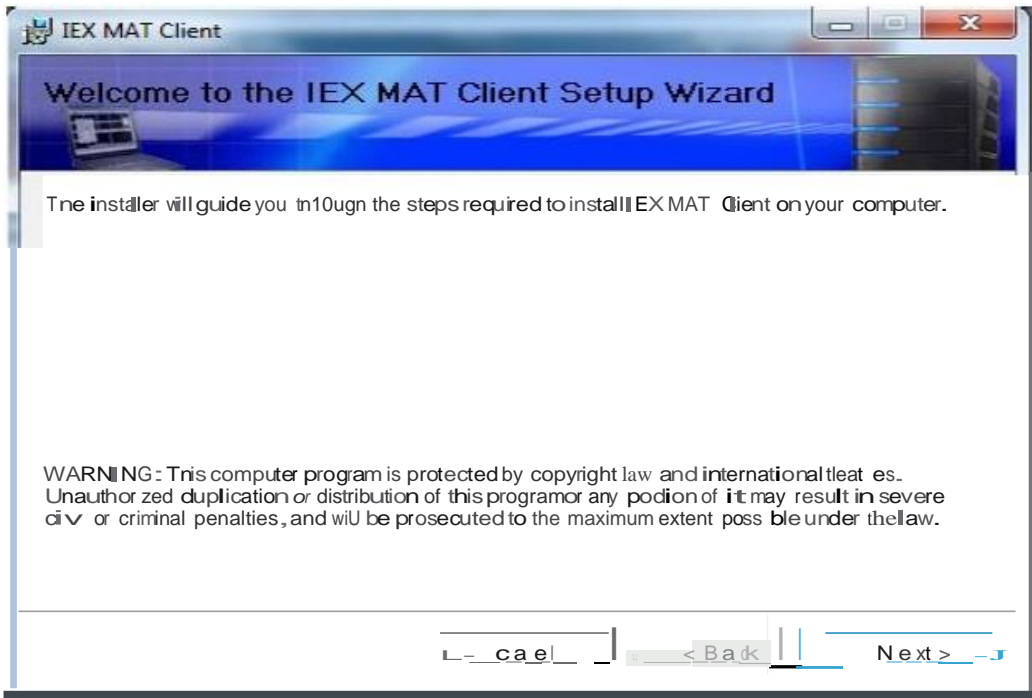
After login go through below link.



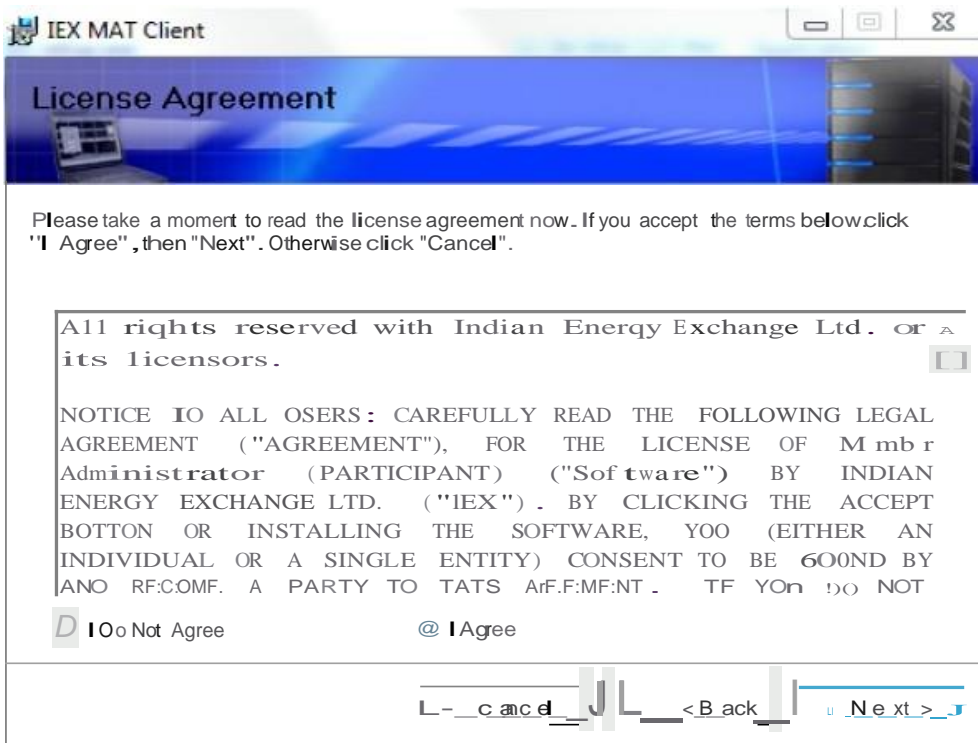
Step2: Please download 'SetupTWS.msi' and 'SetupMAT.msi' installable files.



Step3: For installing MAT,double click on 'Setup MAT file. It will show below window. Click on 'Next' button to start instanstion.



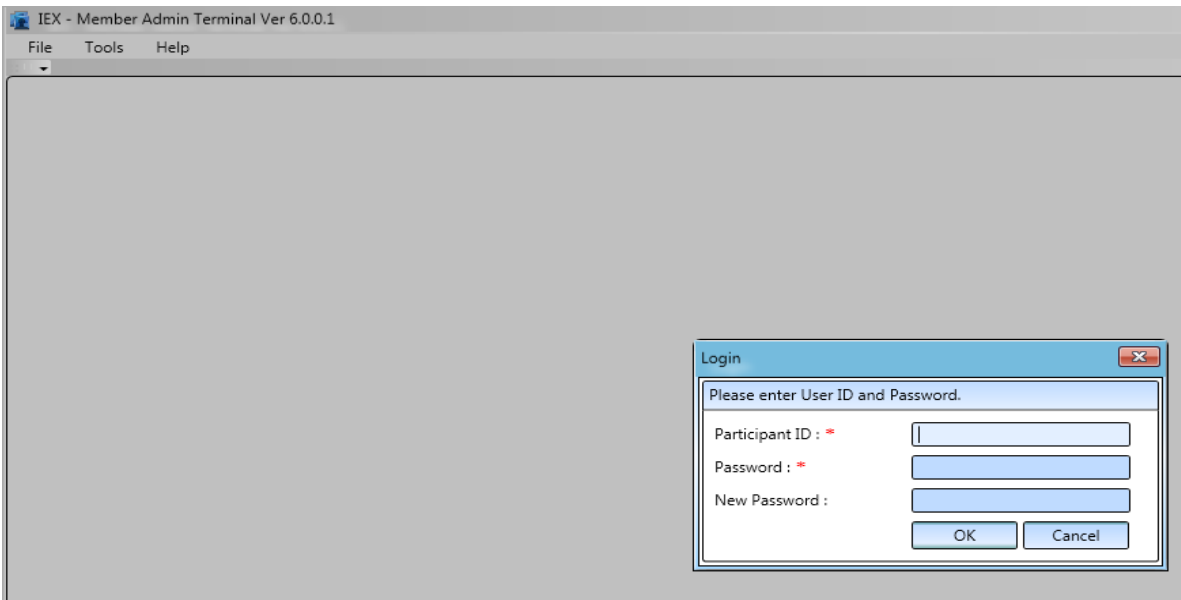
Check "Iagree"



Step4:click on next and finish butt on to complete installations.

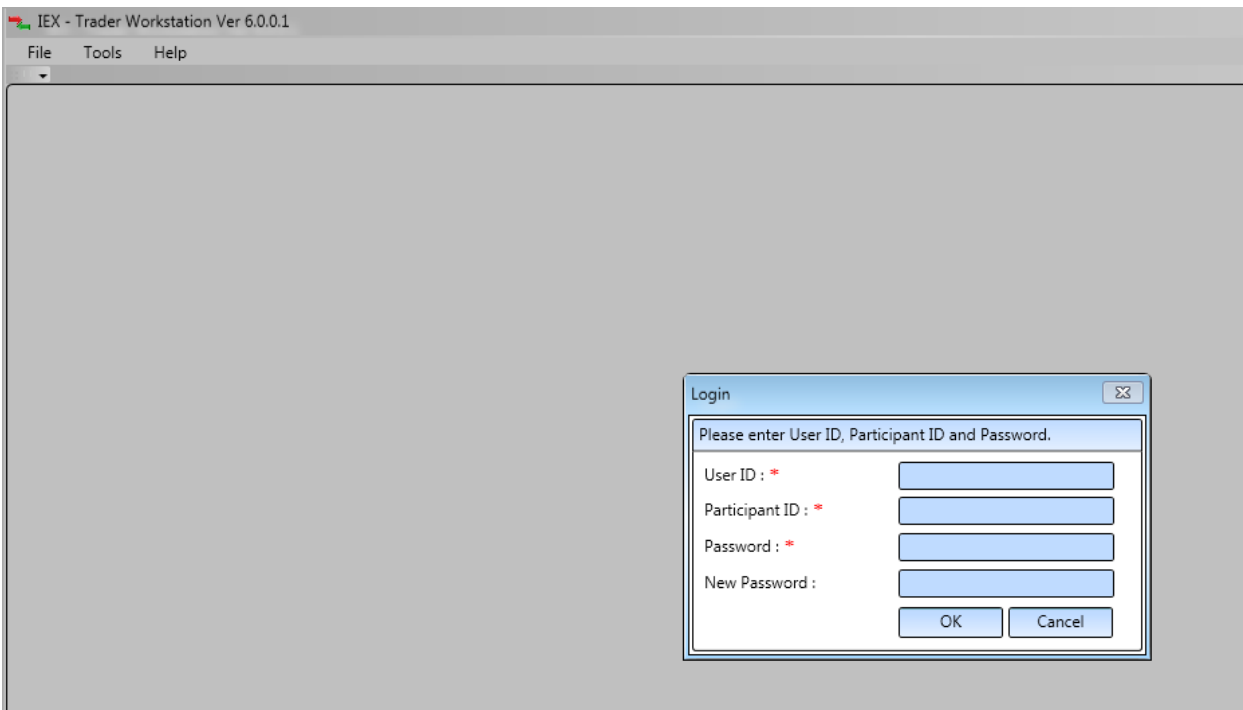
Step5:Please run 'IEX Member Admin Terminal' from desktop,& Enter 'Member login'credential.Member will used existing 'Participant ID'& 'Password'.

Please verify MAT version '6.0.0.1' refer below screen shot.



Step6: Please follow same installation steps for 'setupTWS' installations.

After installation verify Trader Workstation Version as '6.0.0.1', refer below screenshot.



Step7: Member will used existing respective MPLS/SSL connectivity for Live Trading.