



Circular No.: IEX/MO/327/2019

Date: 6th July, 2019

Implementation of New Member Admin Terminal (MAT)

Dear Members,

In pursuance of Rules, Bye-Laws and Business Rules of the Exchange, the Members of the Exchange are hereby informed that Exchange will launch a new version of Member Admin Terminal (MAT) in “Live environment” from trading day **9th of July, 2019**.

Following new features are added in the new version of Member Admin Terminal (MAT).

1. Under DAM segment, in case of Link Block Bid, if Parent Bid is excluded for unfavorable price then the Child Bid having favorable price also gets rejected and the status is shown as ‘Paradoxically Rejected’. Further clarity on the status is provided in the new versions wherein for such child block bid rejection the new status will be shown as ‘Parent Excluded’.
2. In TAM Order book, Order history book and Trade book, Members can now select data for single portfolio by selecting on Participant ID, and then selecting single portfolio ID.

Members may kindly note that the new MAT version (6.2.0.0) is a compulsory download. Unless the Member downloads the new version they will not be able to log into the MAT for trading on 09/07/2019. There are no changes in the existing log in id and password provided by the Member. The new MAT version will be available in member’s SFTP folder under “Member Common / Trade_New folder” from 5.00 pm onwards on 08/07/2019. Members are requested to complete their downloading process before start of next day’s trading.

Members can call IEX number 011-43004057/58 for more clarifications or information that might be needed during this period.

**For and on behalf of
Indian Energy Exchange Limited**

**Prasanna Rao
Vice President - Market Operations**

----- Corporate office-----

Indian Energy Exchange Limited

Unit no.3,4,5 & 6, Fourth Floor, Plot No.7, TDI Center, District Center, Jasola, New Delhi 110 025

Phone: 011 - 4300 4000 | Fax: 011 - 4300 4015 www.iexindia.com

CIN: L74999DL2007PLC277039

Annexure A

IEX Member Admin Trading Application Installation Steps for Live Trading.

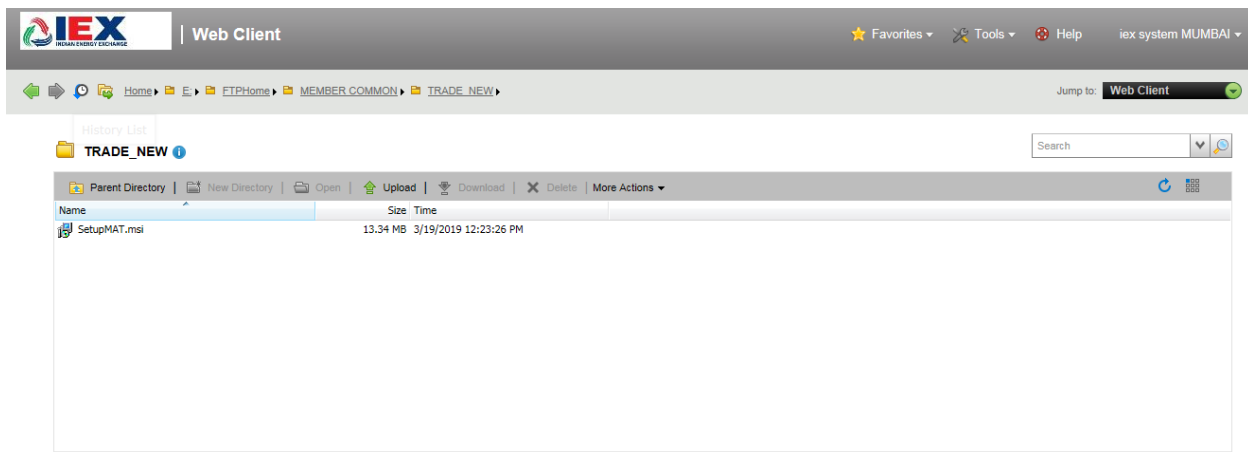
Step1: Download the software from below sftp link.

'<https://sftp.iexindia.com/>' & download MAT setup from '**MEMBER COMMON /TRADE_NEW**' folder.

Please enter existing 'sftp' user name and password for MAT Setup downloading.

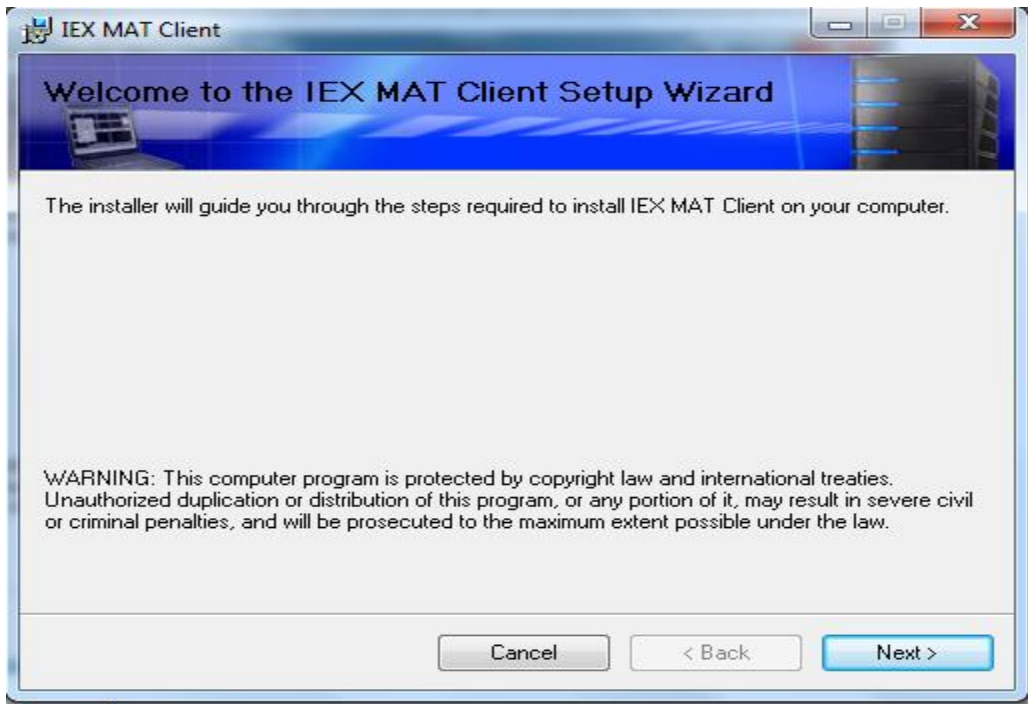


After login go through below link.

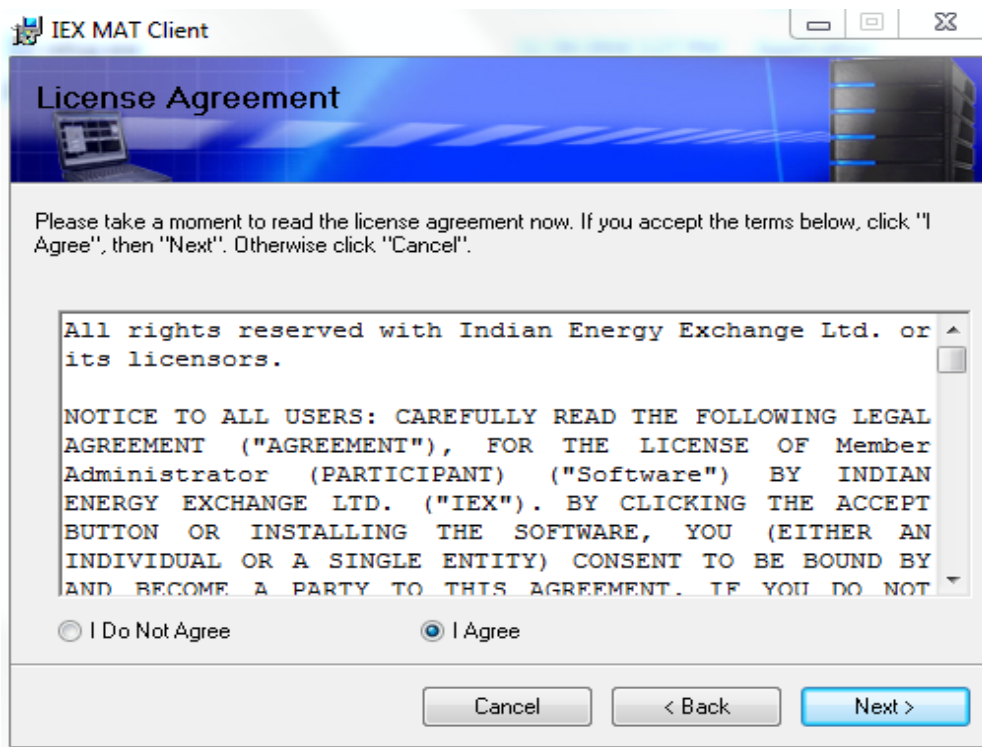


Step2: Please download 'SetupMAT.msi' installable file.

Step3: Please uninstall the previous version of MAT and then start installing the newly downloaded MAT, double click on 'Setup MAT' file. It will show below window. Click on 'Next' button to start installation.



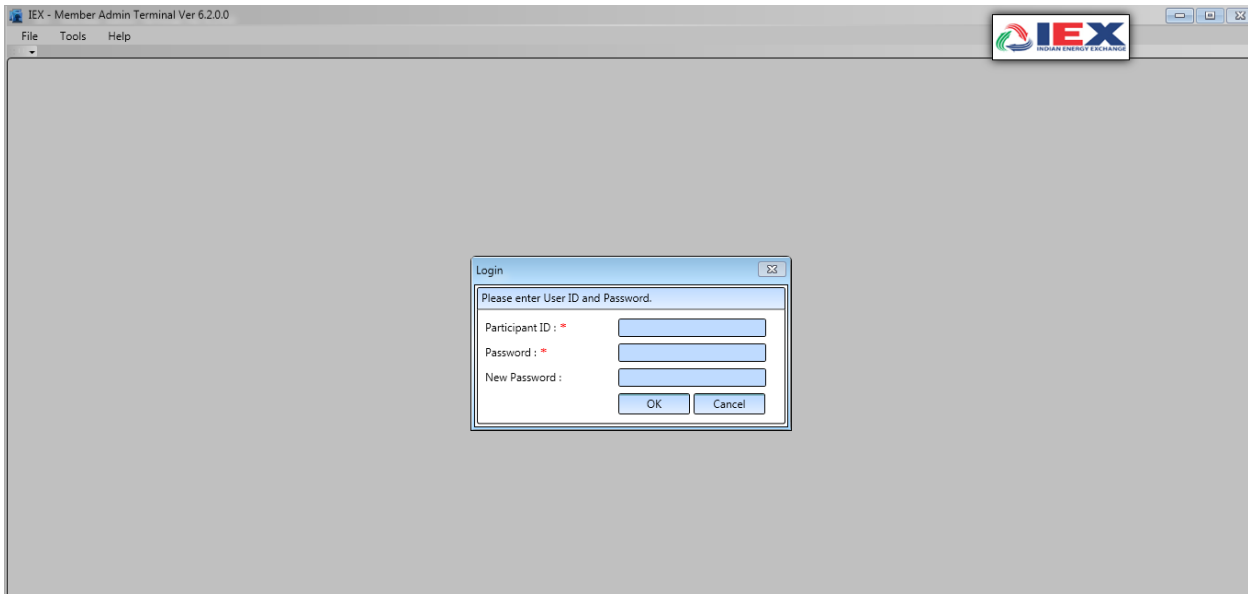
Check "I agree"



Step4: click on next and finish button to complete installation.

Step5: Please run 'IEX Member Admin Terminal' from desktop, & Enter '**Member login**' credential. Member will use existing '**Participant ID**' & '**Password**' .

Please verify MAT version '**6.2.0.0**' refer below screen shot.



Step6: Member will use existing respective MPLS/SSL connectivity for Live Trading.