



Circular No.: IEX/MO/404/2021

Date: 6th Sep 2021

Mock trading for Integrated DAM Segment (GDAM and DAM)

Dear Members,

In pursuance of Rules, Bye-Laws and Business Rules of the Exchange, the Members are hereby notified that: -

IEX is pleased to conduct mock trading for Integrated DAM (GDAM – Solar, Non-Solar, Hydro and DAM - Conventional) on its trading platform. Starting from 07 Sep 2021 (Timings :4:00 PM to 6:00 PM).

Placing GDAM Bids will be available in MAT/TWS under DAM menu , Participants will have option to select from drop down (DAM / GDAM) in DAM sub menus such as Place Single Bid / Place Block Bid / Bid Upload etc.

Key Features of G-DAM Market

- Bid categories for Sellers – Solar, Non-Solar and Hydro
- Bid categories for Buyers – Renewable Purchase
- There will be separate quantity limit for sellers in each category i.e. Solar, Non-Solar and Hydro as per NOC provided to exchange by participants.
- Participants will have option to choose “Order Carry forward (OCF)” option at the time of placing bid.
- If OCF option is selected as “Yes” then bids those are not selected in GDAM market will be carry forwarded to DAM market and these bids will be the part of matching under DAM market.
- If OCF option is selected as “NO” then any quantity not selected in GDAM will not get carry forwarded to DAM Segment.
- OCF bids will be followed by either Premium or Discount for the purpose of determining bid price for carry forward orders to DAM market. Any premium or

discount defined at the time of placing bid will be added or subtracted from the prices submitted in GDAM segment. (Explained in Examples).

- Single / Block Bid types will be available for GDAM market. Block bid linking, Minimum Quantity Block Bid and Profile Block Bid features will not be available for GDAM Segment.
- GDAM bids quantity carry forwarded to DAM segment will not be available for carry forward to DAC under TAM segment.

Examples:

Sell bid with OCF / Premium

Particulars	Sub-Category	Qty	Price (Rs. / MWh)	OCF	Premium / Discount	OCF Value (Rs. / MWh)
GDAM Bid Qty Placed	Solar	-200	3000	Yes	Premium	100
GDAM Executed Qty		-40				
GDAM OCF Qty to DAM		-160	3100			

In above example, User has placed single bid GDAM segment under Solar category for sell and selected OCF with Premium of Rs. 100 / MWh. Executed quantity in GDAM segment for above user is 40 MWh, hence OCF quantity for DAM segment will be 160 MW @ 3100 Rs./MWh (=3000 + 100). In similar way if Discount value is defined by user it will be subtracted from bid price at the time of OCF order placement in DAM.

Buy bid with OCF / Discount

Particulars	Sub-Category	Qty	Price (Rs. / MWh)	OCF	Premium / Discount	OCF Value (Rs. / MWh)
GDAM Bid Qty Placed	Renewable Purchase	200	3000	Yes	Discount	100
GDAM Executed Qty		40				
GDAM OCF Qty to DAM		160	2900			

In above example, User has placed single bid GDAM segment under Renewable Purchase category for Buy and selected OCF with Discount of Rs. 100 / MWh. Executed quantity in GDAM segment for above user is 40 MWh, hence OCF quantity for DAM segment will be 160 MW @ 2900

Rs./MWh (=3000 - 100). In similar way if Premium value is defined by user it will be added to bid price at the time of OCF order placement in DAM.

All members are requested to participate in the mock trading session, to experience and acquaint themselves with the new product/facilities in trading system.

Installation Steps are provided in Annexure - A for downloading the required setup to participate in Mock trading.

There will be no financial or delivery-based obligation raised on the Members for trades done in the mock session and no reports will be provided for Mock Trading.

**For and on behalf of
Indian Energy Exchange Limited**

**(Sd\ -)
Amit Kumar
Senior Vice President
(Market Operations)**

----- Corporate office-----
Indian Energy Exchange Limited
Plot No. C-001/A/1, 9th Floor, Max Towers, Sector 16B, Noida, Uttar
Pradesh-201301 Phone: 0120 – 4648100 | www.iexindia.com
CIN: L74999DL2007PLC277039

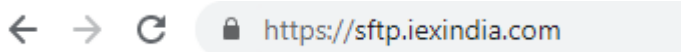
Annexure - A

Software Installation Guide for MOCK Session

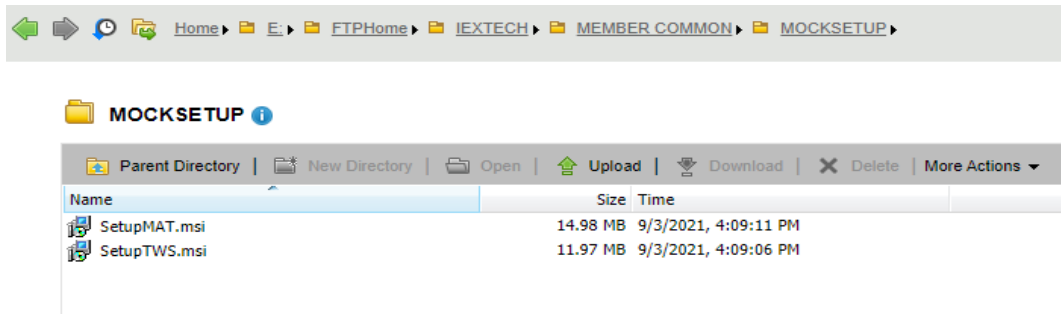
Steps for TWS/MAT Application Installation:

Step1: Download the setup of TWS/ MAT from SFTP Server

- Access IEX SFTP Server by accessing URL '<https://sftp.iexindia.com>' by your given user ID and password.



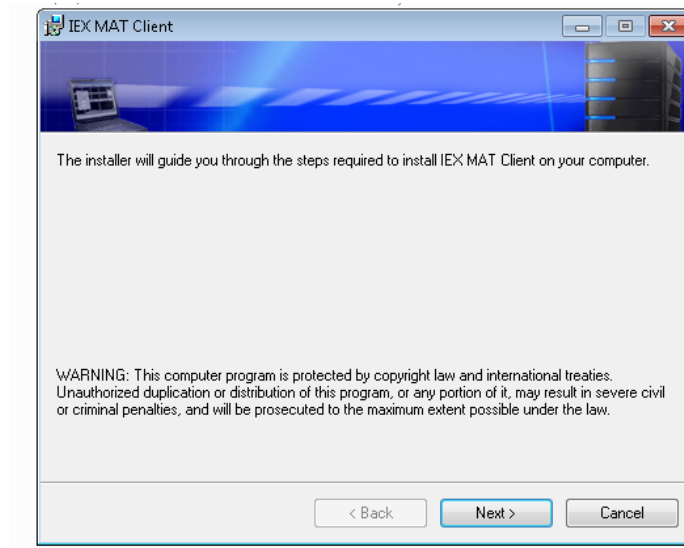
- Access the path "MEMBER COMMON/MOCKSETUP/" as shown below.



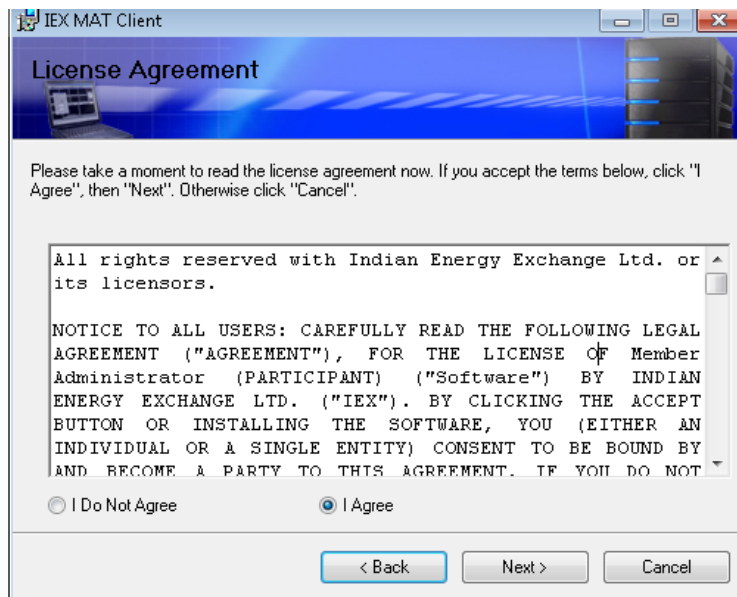
- Download the MAT and TWS setup.msi by right click & download tab.

Step2: Installation Steps for MAT Application

- Run/Double click on setup and Click on "Next" tab.



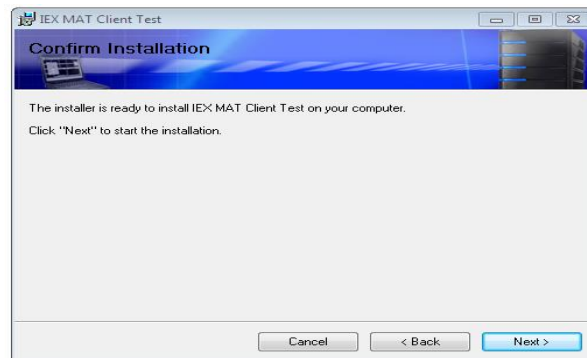
- Select "I Agree" and click on "Next" tab.



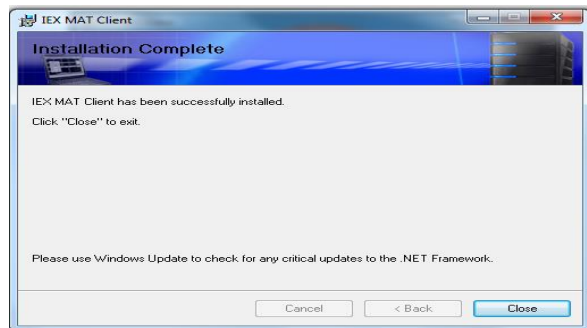
- "Select Installation Folder" and click on "Next" tab.



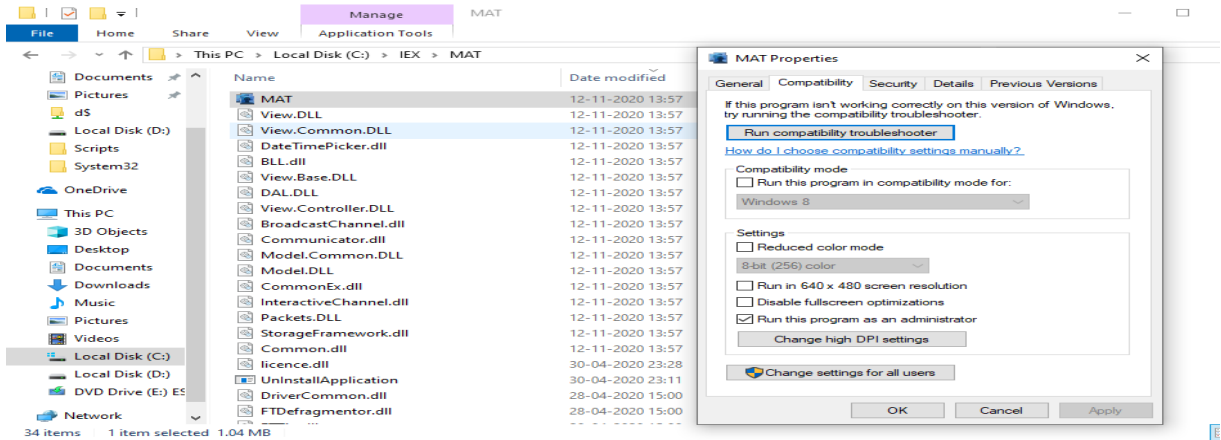
- Click on “Next” tab.



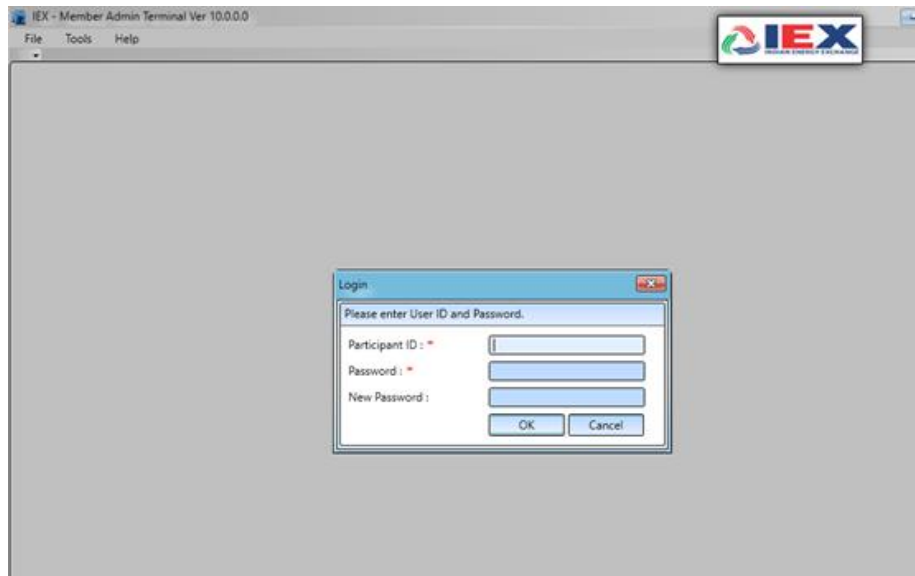
- After installation process click on “Close” tab. MAT application has been installed.



- To Select the Compatibility section please follow the steps as shown below. Please navigate the path “C:\ IEXTEST\MAT” folder path & Select “MAT” object right click select the “properties” tab. Same will open new window, navigate to Compatibility tab and check the “Run this program as an administrator”

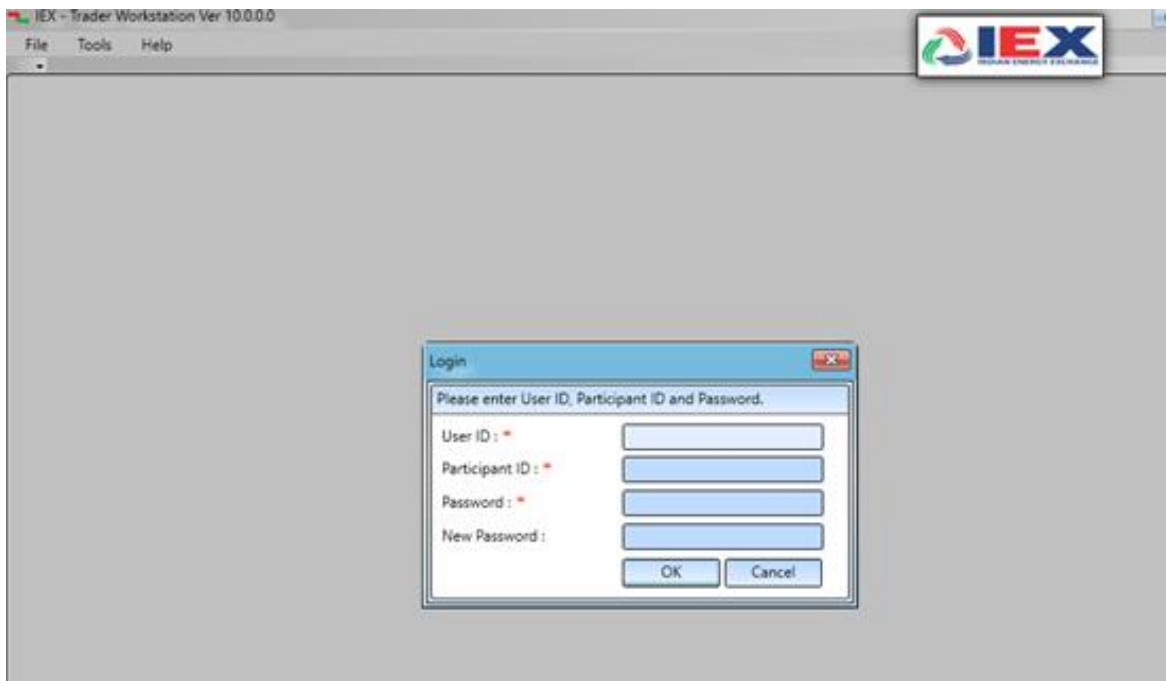


- Please verify MAT version ‘10.0.0.0’ refer below screen shot.



Step 3: Please follow same installation steps for ‘setup TWS’ installation.

After installation verify Trader Workstation Version as ‘10.0.0.0’, refer below screenshot. Double Click on TWS Icon on your Desktop screen

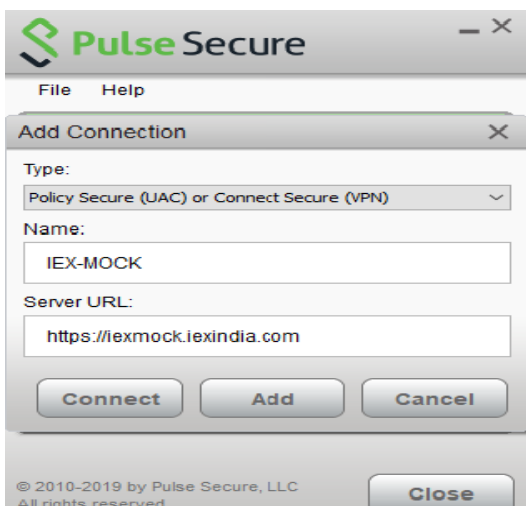


Steps for SSL-VPN Connection Details: Using Existing Pulse Desktop Client

1. Launch **Pulse Secure Desktop Client** and Click the "+" icon to Add NEW URL address.
Click on add (+) tab as shown



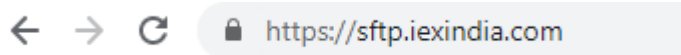
2. And add Name & Server URL <https://iexmock.iexindia.com> entries as shown below and click on "save" tab to save the settings.



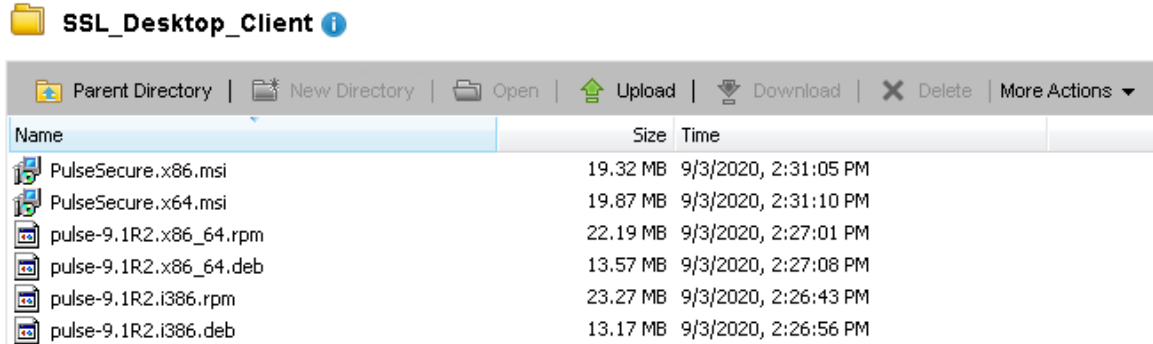
Steps for SSL-VPN Installation Details only if using New Machine for MOCK Session:

Step1: Download the Pulse Desktop Client (OS Compatible) from SFTP Server

- Access IEX SFTP Server by accessing URL '<https://sftp.iexindia.com>' by your given user ID and password.



- Access the path "MEMBER COMMON/SSL_Desktop_Client/" as shown below.

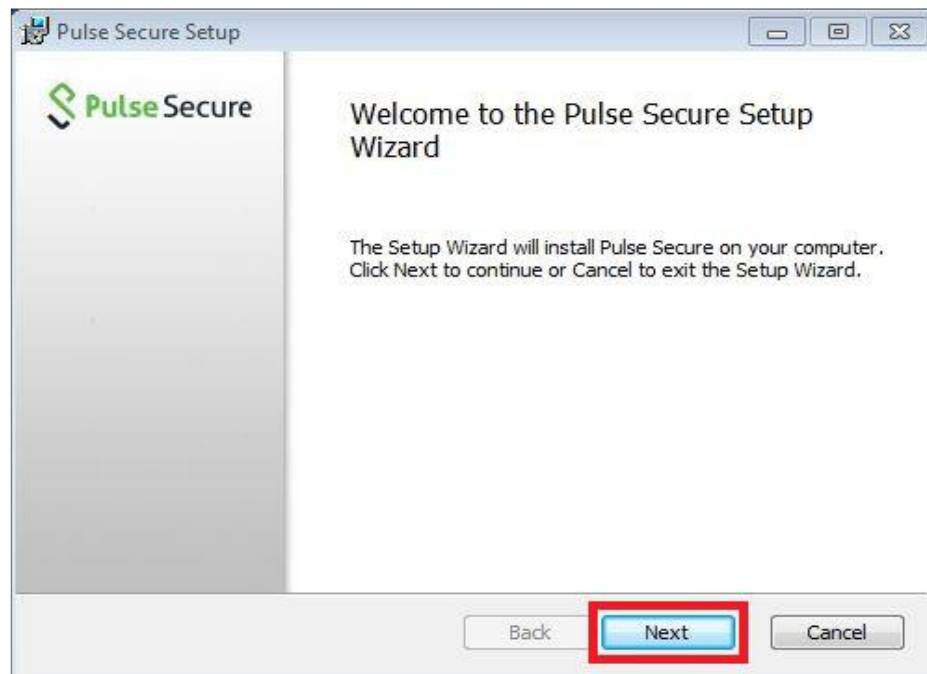


Note: ".msi" files for WindowsOS and ".rpm" & ".deb" for UnixOS

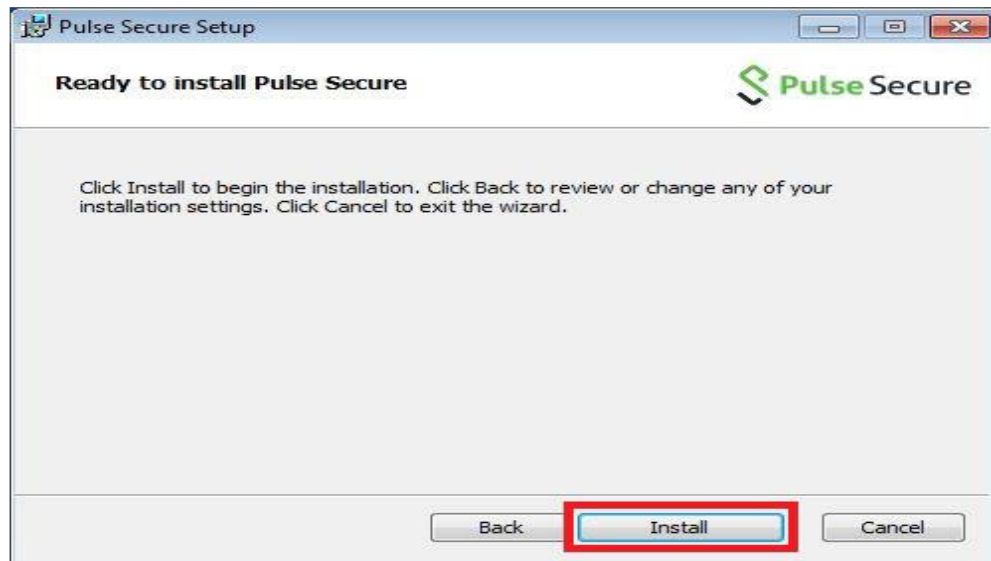
INSTALLING THE PULSE SECURE VPN CLIENT:

Installing the new Pulse Secure VPN client is a straightforward process. Below are the instructions to install the Pulse Secure client.

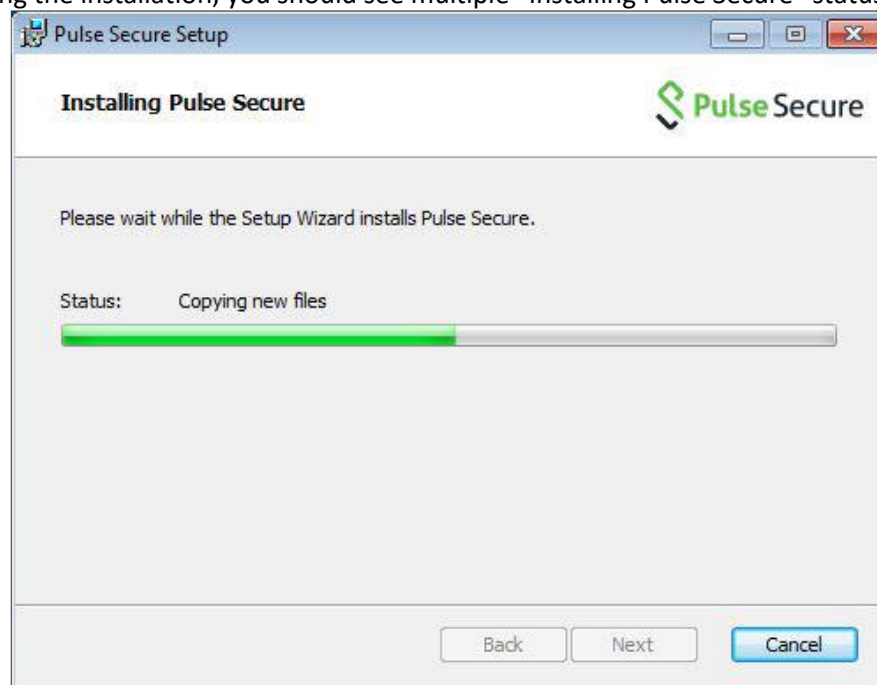
- A. Once the file has successfully downloaded, launch the Pulse Secure installer. You should see the "Welcome to the Pulse Secure Setup Wizard" dialog. Click Next



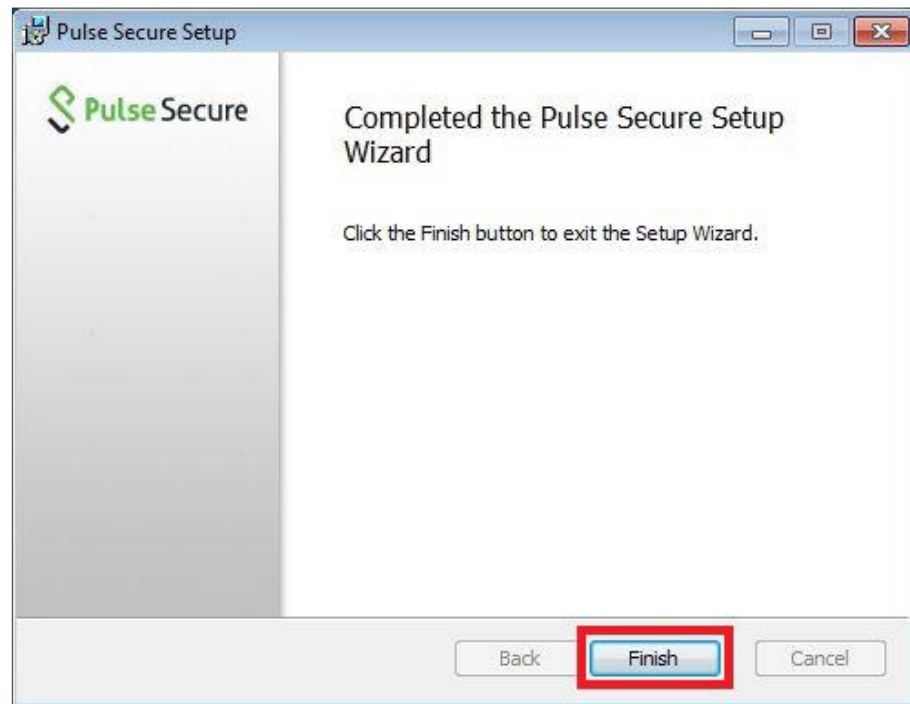
- B. You should now see the “Ready to install Pulse Secure” dialog. Click Install.



- C. The Pulse Secure installation will now begin. This may take up to a few minutes depending on your computer. During the installation, you should see multiple “Installing Pulse Secure” status screens.



- D. Once finished, you should see the “Completed the Pulse Secure Setup Wizard” dialog. Click Finish. Congratulations, the Pulse Secure VPN client is now successfully installed.



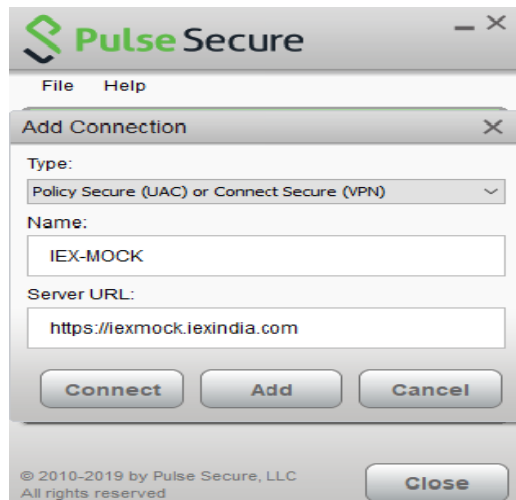
1. CONFIGURING THE PULSE SECURE VPN CLIENT

Once Pulse Client installed, we must launch and configure the Pulse Secure VPN client.

- A. You should now see the main Pulse Secure application with no connections. Click on the "Add Connection" button (+) as highlighted in the screenshot below.



- B. You will now see a blank "Add Connection" dialog. Fill out the "Name" and "Server URL" as shown below.



- C. Launch Pulse Secure from the application group on the Windows startup menu. Once open, you should now see the “IEX-Mock-Session” connection in the list. Click Connect.
- D. Next, enter mock credential and click Connect.
- E. If your connection attempt was successful, the Pulse Secure VPN client should now connect and minimize to the Windows system tray as shown in the screenshot below. You may now begin working as normal.

