



Circular No.: IEX/MO/320/2019

Date: 10th April, 2019

Implementation of New Version in DAM-TAM-REC-ESCERTS System

Dear Members,

In pursuance of Rules, Bye-Laws and Business Rules of the Exchange, the Members of the Exchange are notified as under:-

Exchange will launch the new version of Member Admin Terminal (MAT) & Trader Work Station (TWS) in live environment from trading day 12th of April, 2019.

With the installation of new version following features are provided:

- 1. A new column as 'Quantity (MWh)' is introduced and placed next to column 'Quantity (MW)' in Block Bid Entry & Block Bid Book in MAT and TWS.**
- 2. A new row is introduced in the bottom of Block Bid Entry to display the sum 'Quantity (MW)' & 'Quantity (MWh)'.**

The new version no. for MAT & TWS is 6.1.0.1

Members may kindly note that this is a **compulsory download** version. Unless the Member downloads the new version, they will not be able to log in. Previous old version will not be accessible to members. There are no changes in the login & bidding procedures and it is similar to the procedures followed by them till now. Further, in order to smoothly transit to the new version all members are requested to download the new version kept in Member's SFTP "Common folder" from **06:00 PM onwards on 11th of April, 2019** and start logging into their new MAT & TWS system from the new trading session on **12th of April, 2019**.

REC Exclusive members are also requested to download the new version and log in into the system before start of the April REC session.

Members can call IEX Customer Support number 011-43004042/53/54 for more clarifications or information that might be needed during this period.

For and on Behalf of Indian Energy Exchange Limited

Akhilesh Awasthy
Director (Market Operations)

----- Corporate office-----
Indian Energy Exchange Limited
Unit no.3,4,5 & 6, Fourth Floor, Plot No.7, TDI Center, District Center, Jasola, New Delhi 110 025
Phone: 011 - 4300 4000 | Fax: 011 - 4300 4015 | www.iexindia.com
CIN: L74999DL2007PLC277039

Annexure I

IEX Trading application Installations Steps for Unified Live Trading.

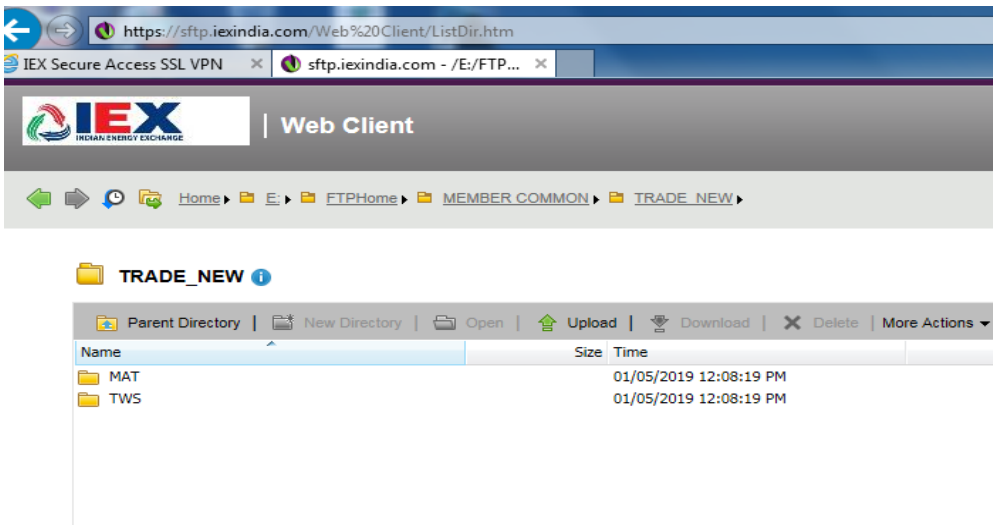
Step1: Downloading software from below sftp link.

'<https://sftp.iexindia.com/>' & download TWS/MAT setup from '**MEMBER COMMON /TRADE_ NEW**' folder.

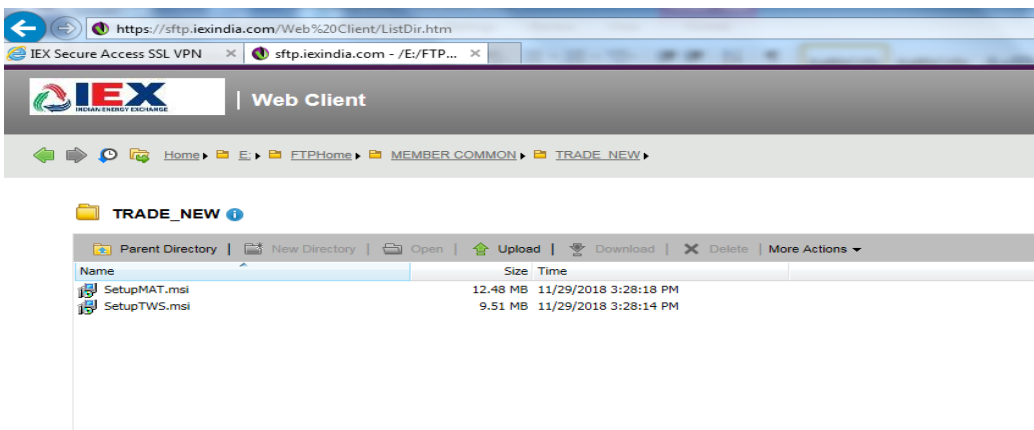
Please enter existing 'sftp' user name and password for Trade Setup downloading.



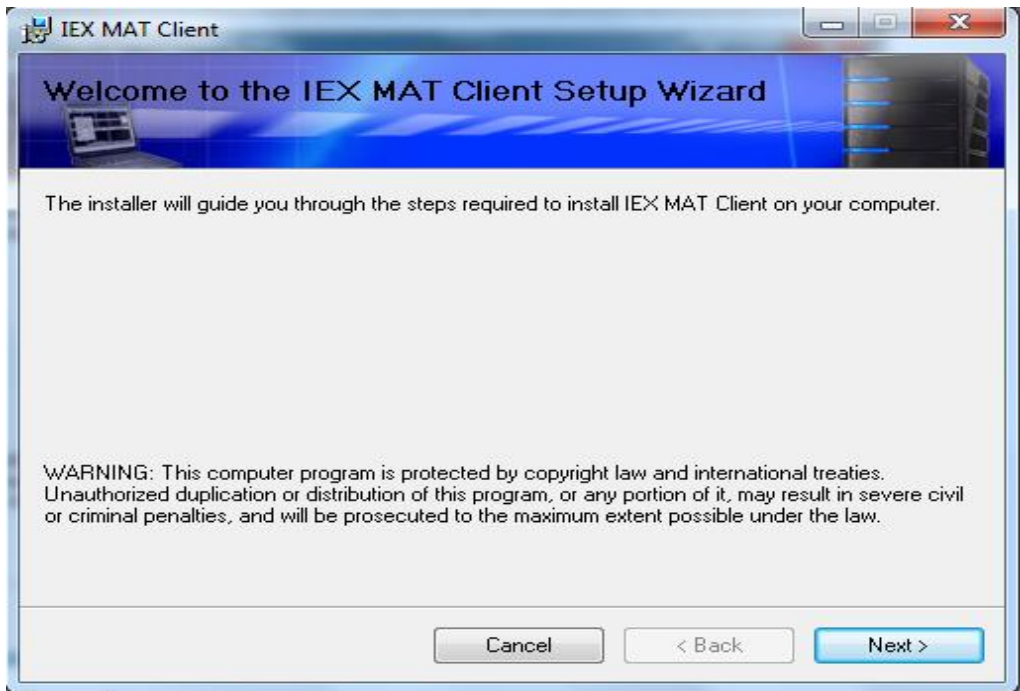
After login go through below link.



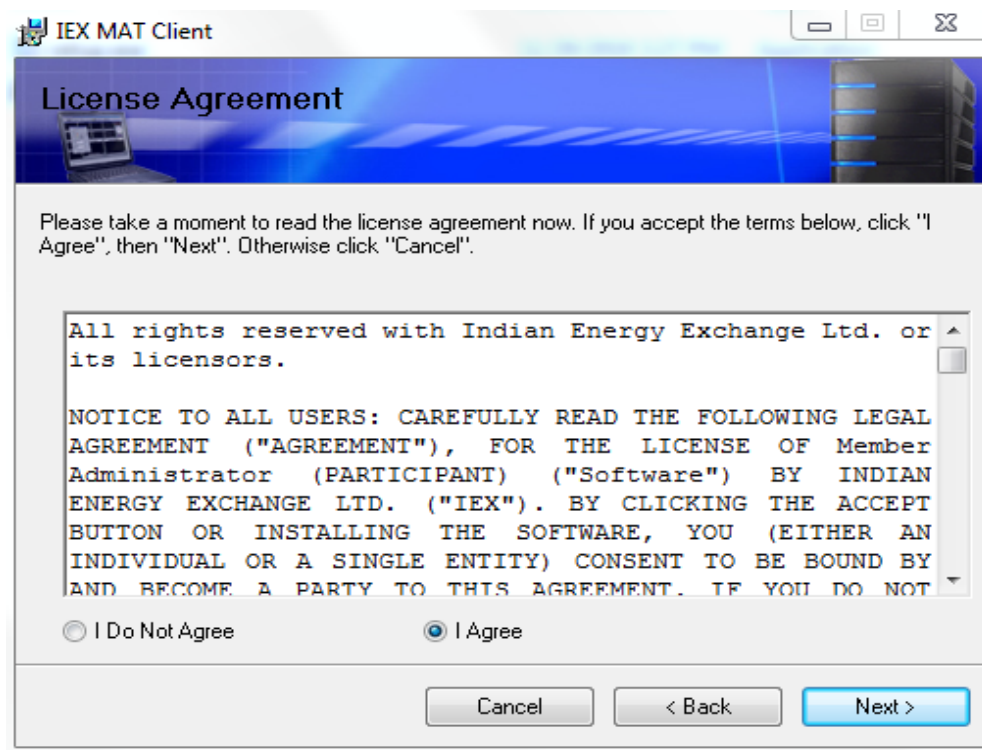
Step2: Please download 'SetupTWS.msi' and 'SetupMAT.msi' installable files.



Step3: For installing MAT, double click on 'Setup MAT' file. It will show below window. Click on 'Next' button to start installation.



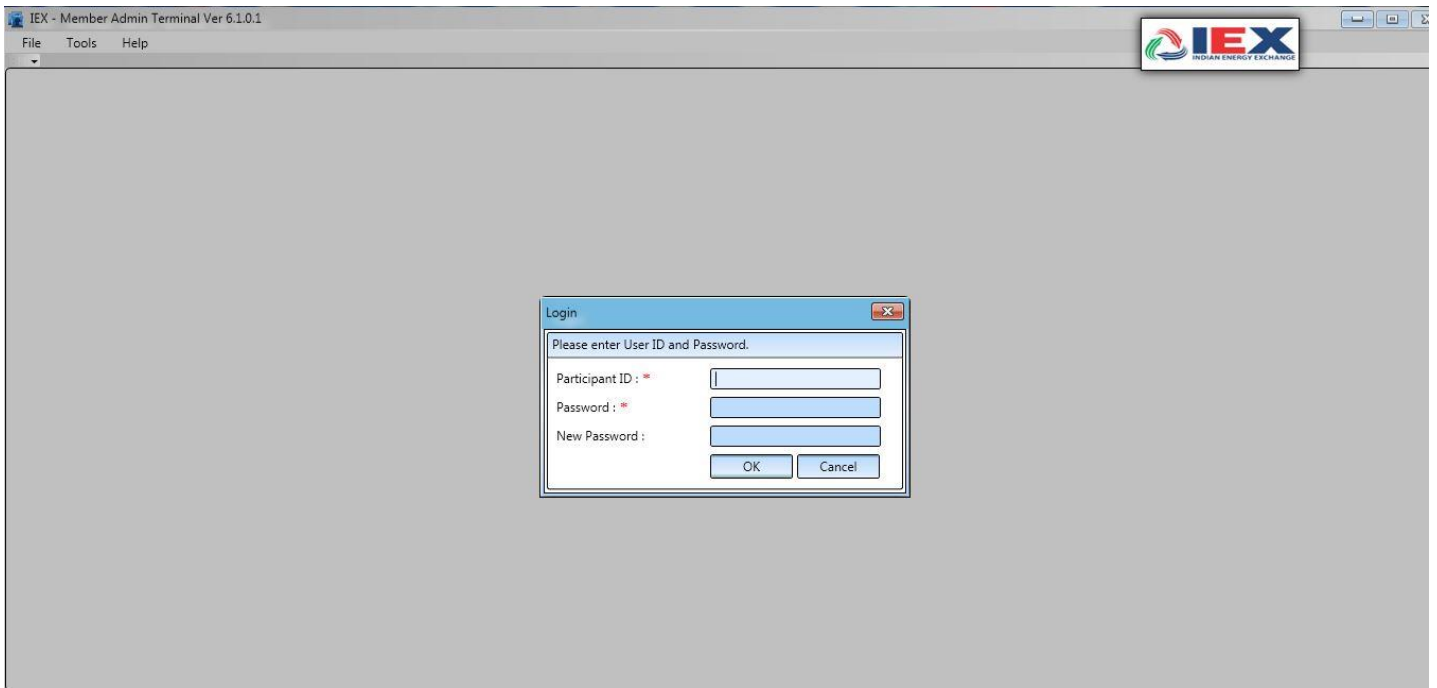
Check "I agree"



Step4: click on next and finish button to complete installations.

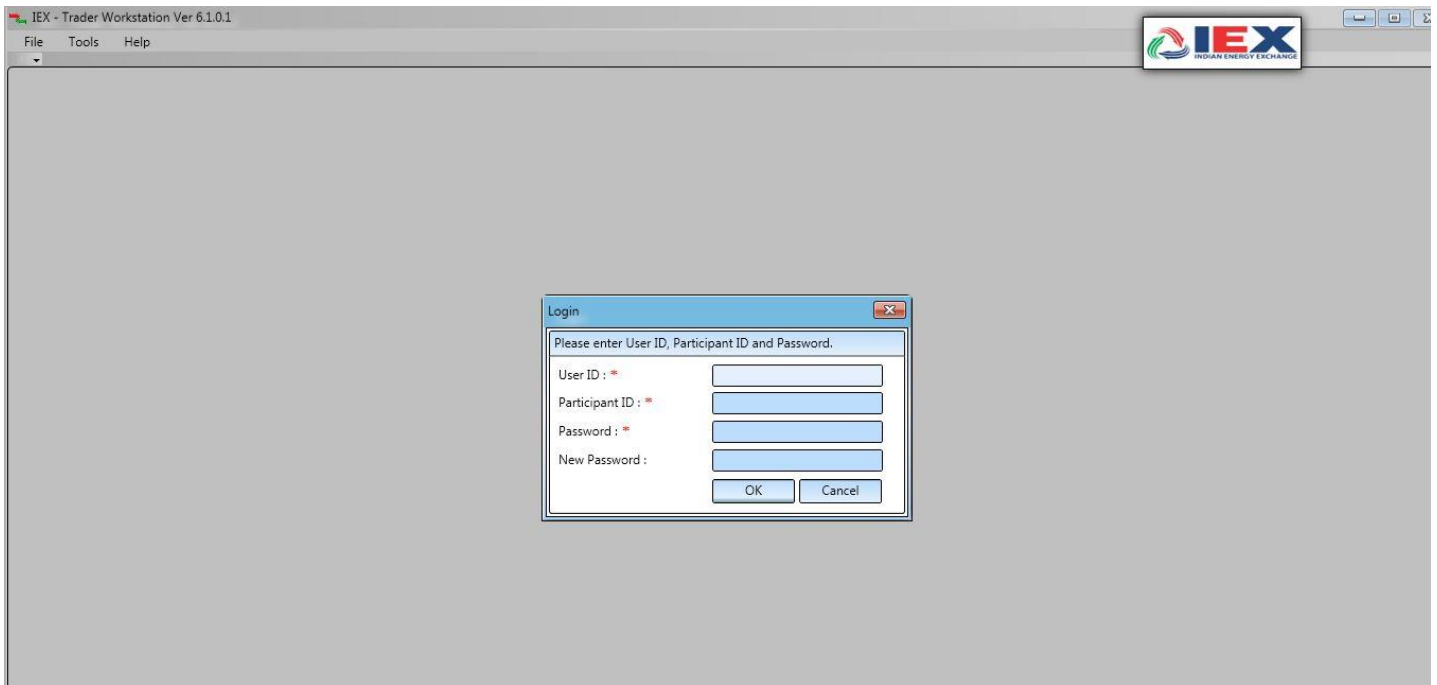
Step5: Please run 'IEX Member Admin Terminal' from desktop, & Enter '**Member login**' credential. Member will used existing '**Participant ID**' & '**Password**' .

Please verify MAT version '6.1.0.1' refer below screen shot.



Step6: Please follow same installation steps for 'setupTWS' installations.

After installation verify Trader Workstation Version as '6.1.0.1', refer below screenshot.



Step6: Member will used existing respective MPLS/SSL connectivity for Live Trading.