



Circular No.: IEX/MO/306/2018

Date: 13<sup>th</sup> November, 2018

---

## Implementation of New version in TAM-EC System

---

Dear Members,

In pursuance of Rules, Bye-Laws and Business Rules of the Exchange, the Members of the Exchange is notified as under:-

Exchange will launch the new version of **TAM-EC Member Admin Terminal (MAT) & Trader WorkStation (TWS) in live environment with technical upgrades from trading day 14<sup>th</sup> of Nov, 2018.**

Members may kindly note that this is a **compulsory download** version. Unless the Member downloads the new version, he will not be able to log in. Previous old version will not be accessible to members. There are no changes in the login & bidding procedures and it is similar to the procedures followed by them till now. Further, in order to smoothly transit to the new TAM MAT/TWS version all members are requested to download the new version kept in Member's SFTP "Common folder" from **06:00 PM on 13<sup>th</sup> of Nov, 2018** and start logging into their MAT & TWS system from the new TAM trading session on 14<sup>th</sup> of November, 2018.

REC Exclusive members are also requested to download the new version and log in into the system before start of the November REC session.

Members can call IEX Customer Support number 011-43004042/54 for more clarifications or information that might be needed during this period.

**For and on Behalf of Indian Energy Exchange Limited**

**Akhilesh Awasthy**  
**Director (Market Operations)**

----- Corporate office-----  
Indian Energy Exchange Limited  
Unit no.3,4,5 & 6, Fourth Floor, Plot No.7, TDI Center, District Center, Jasola, New Delhi 110 025  
Phone: 011 - 4300 4000 | Fax: 011 - 4300 4015 | [www.iexindia.com](http://www.iexindia.com)  
CIN: L74999DL2007PLC277039

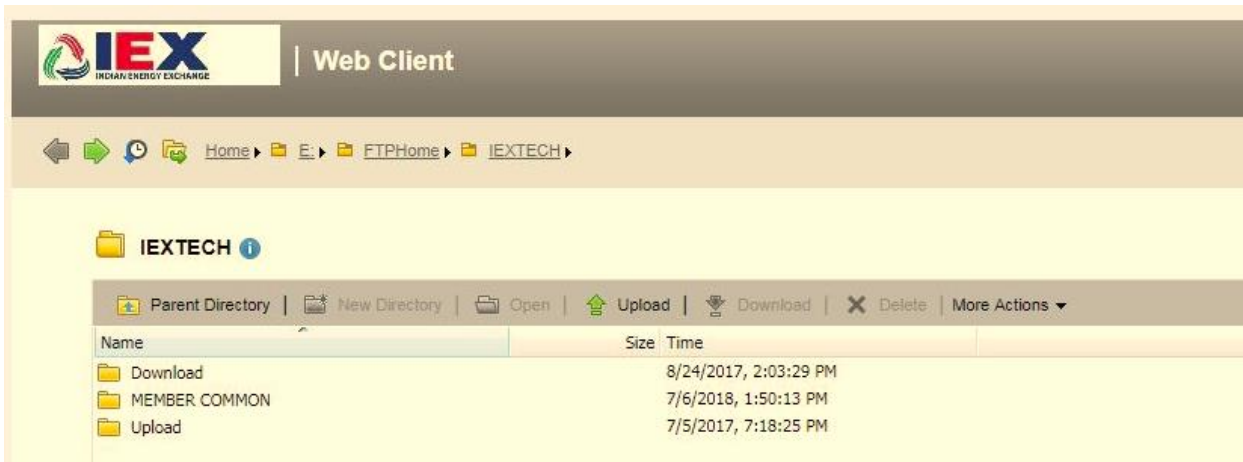
## Annexure I

### IEX Trading application Installations Steps for Live

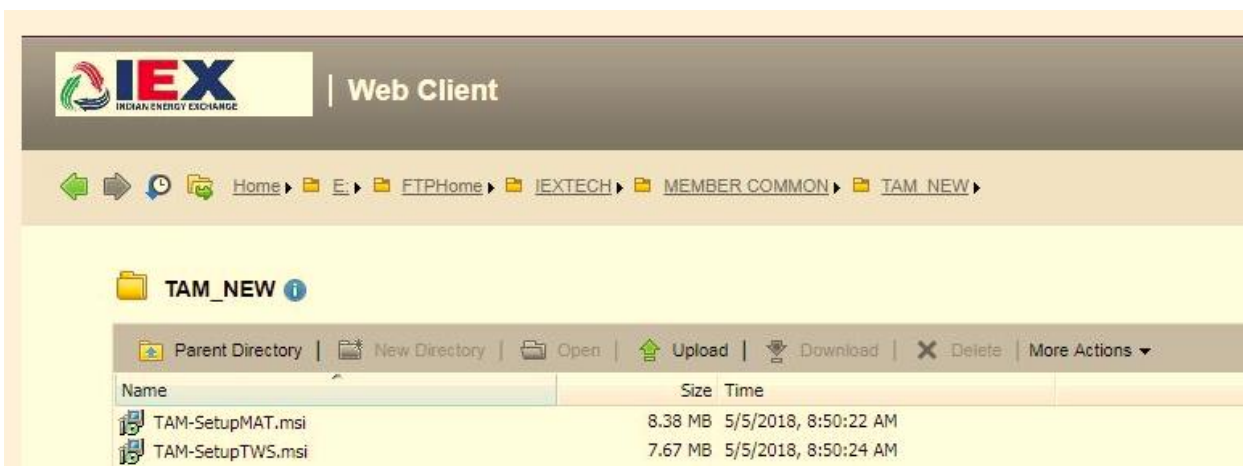
**Step1:** Downloading software from below sftp link.

'<https://sftp.iexindia.com/>' & access 'LIVE SETUP' folder which is located in 'MEMBER COMMON' & TAM NEW folder.

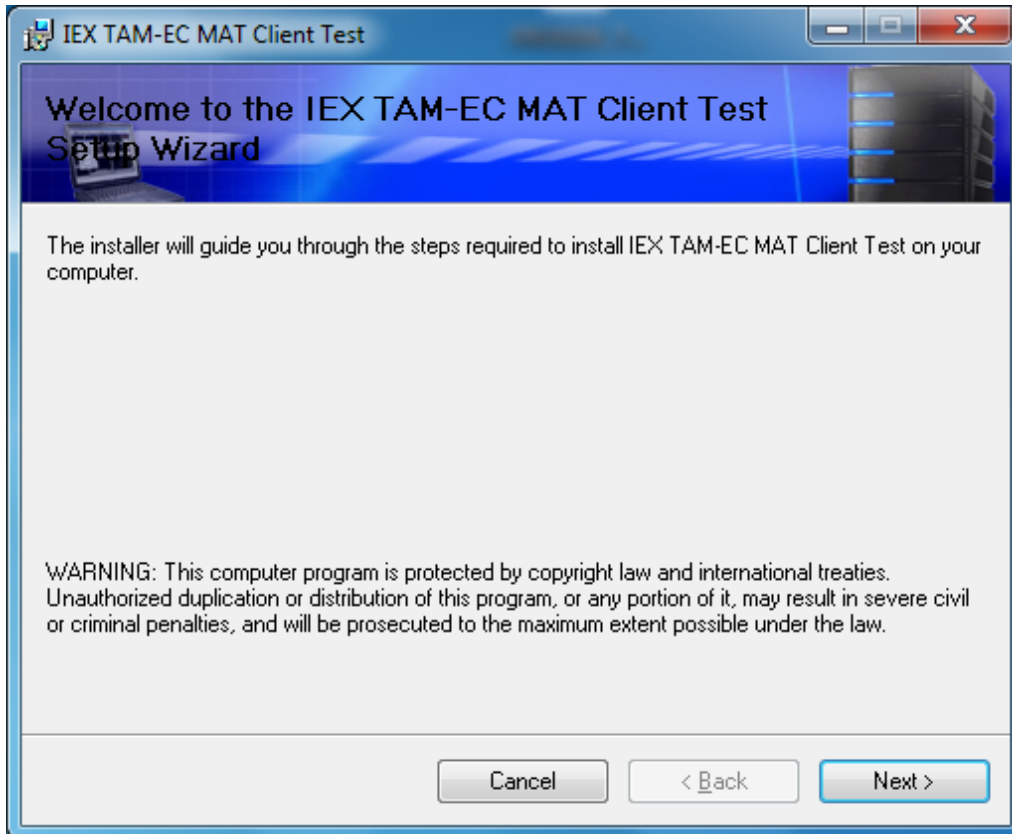
Please enter existing 'sftp' user name and password for Live Setup downloading.



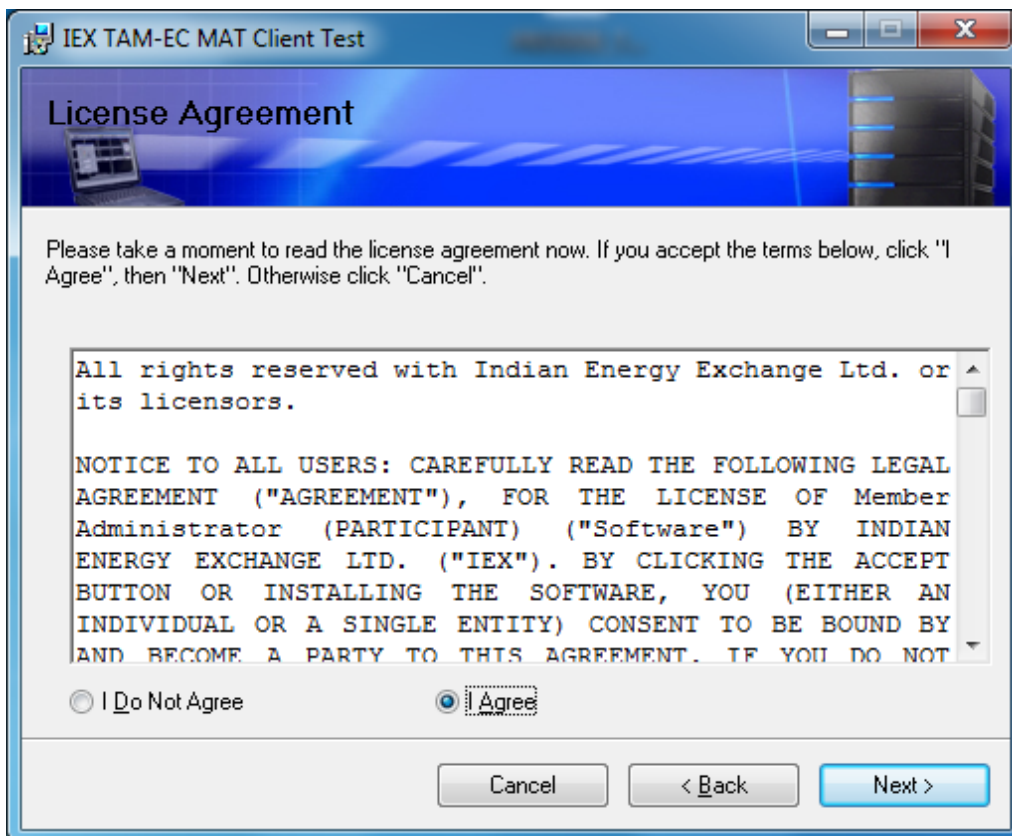
**Step2:** Download 'SetupTWS' and 'SetupMAT' for TAM setup.



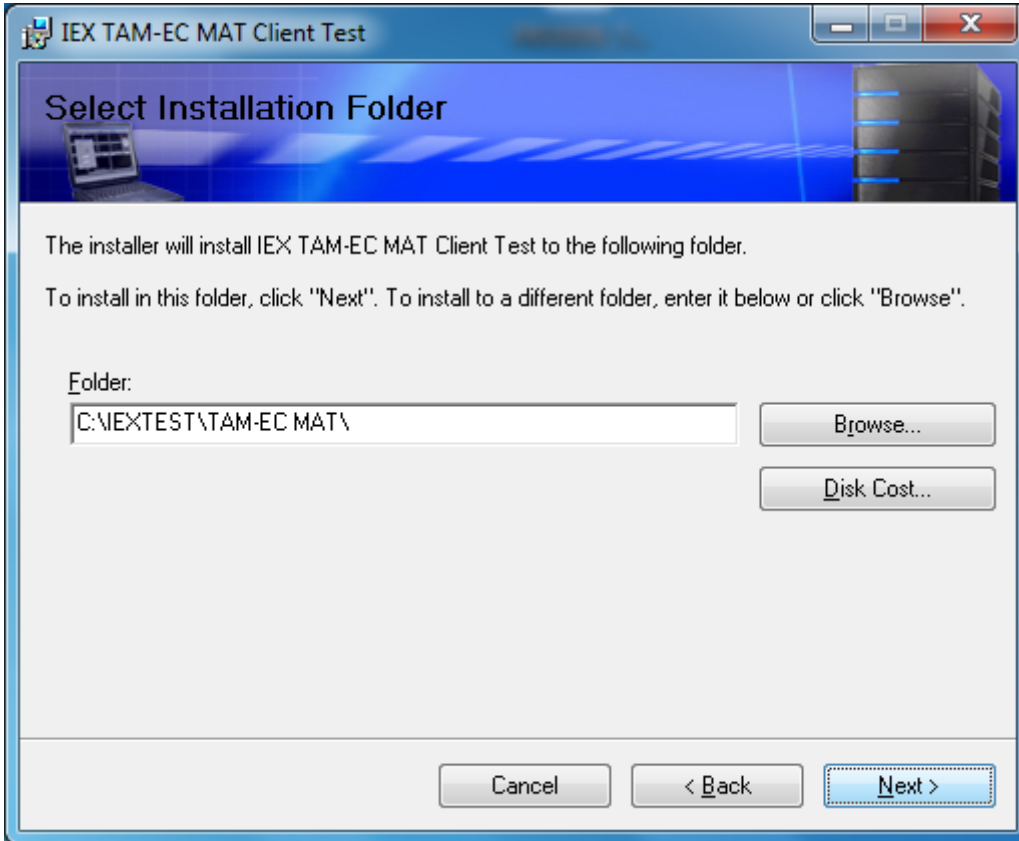
**Step3:** For installing MAT, double click on 'Setup MAT' file. It will show below window. Click on 'Next' button to start installation.



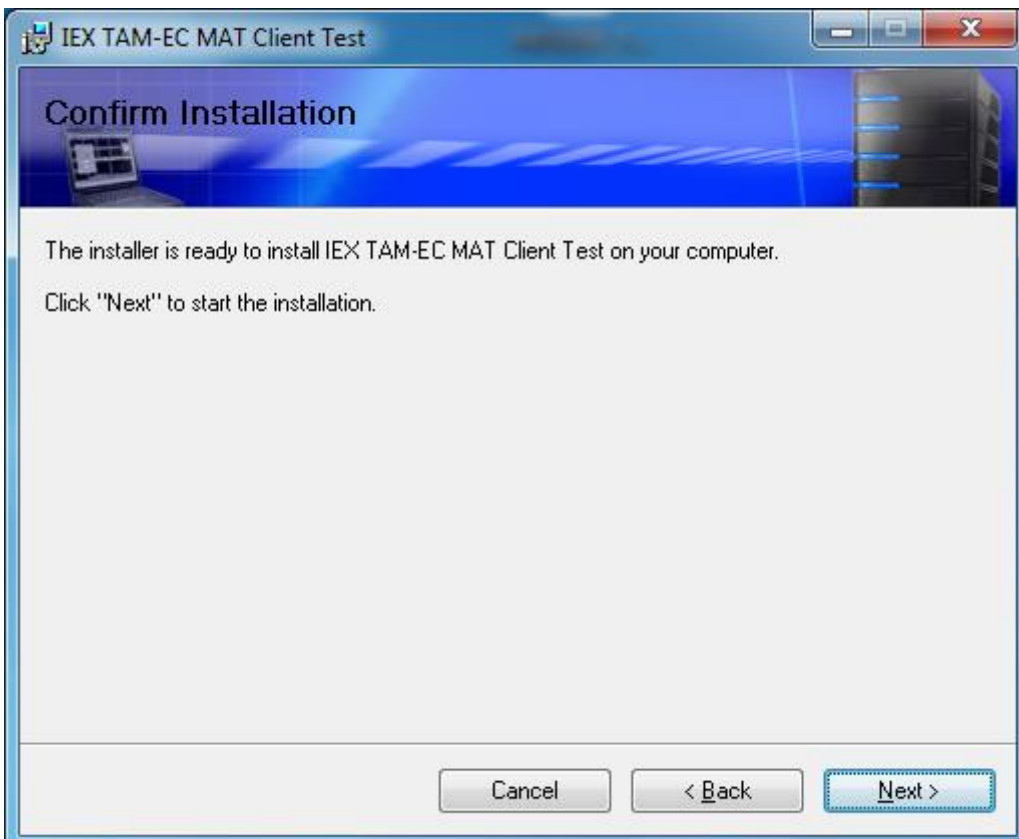
Check "I agree"



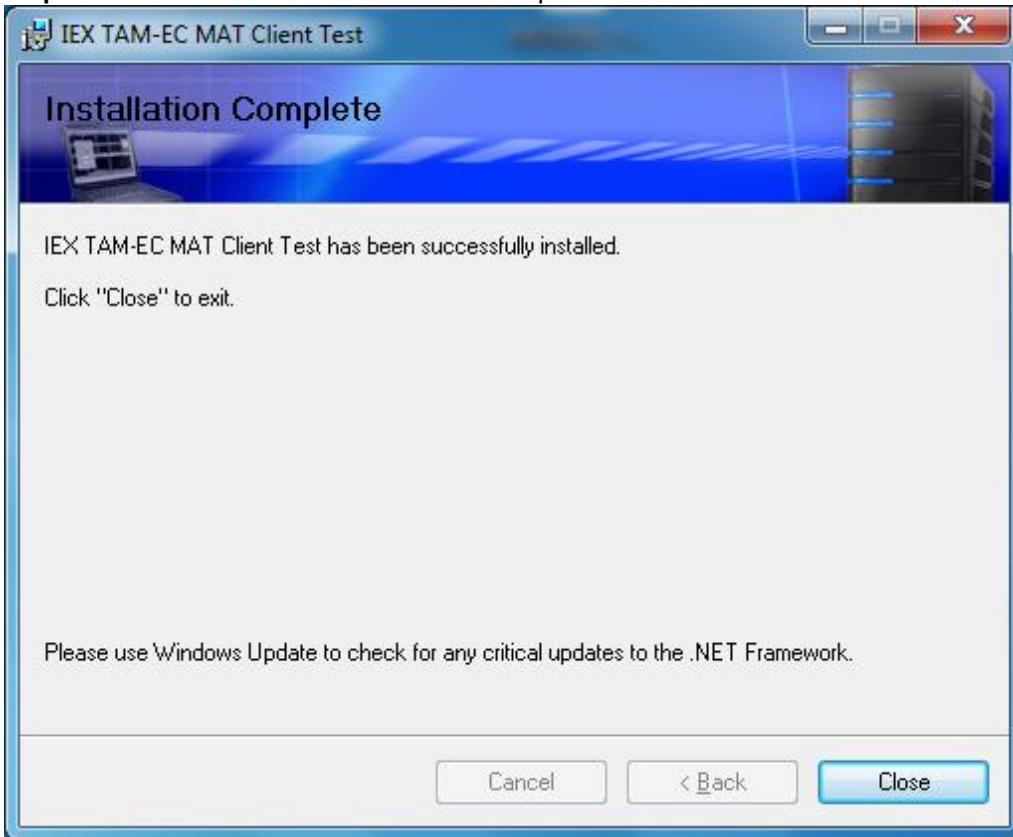
Click Next



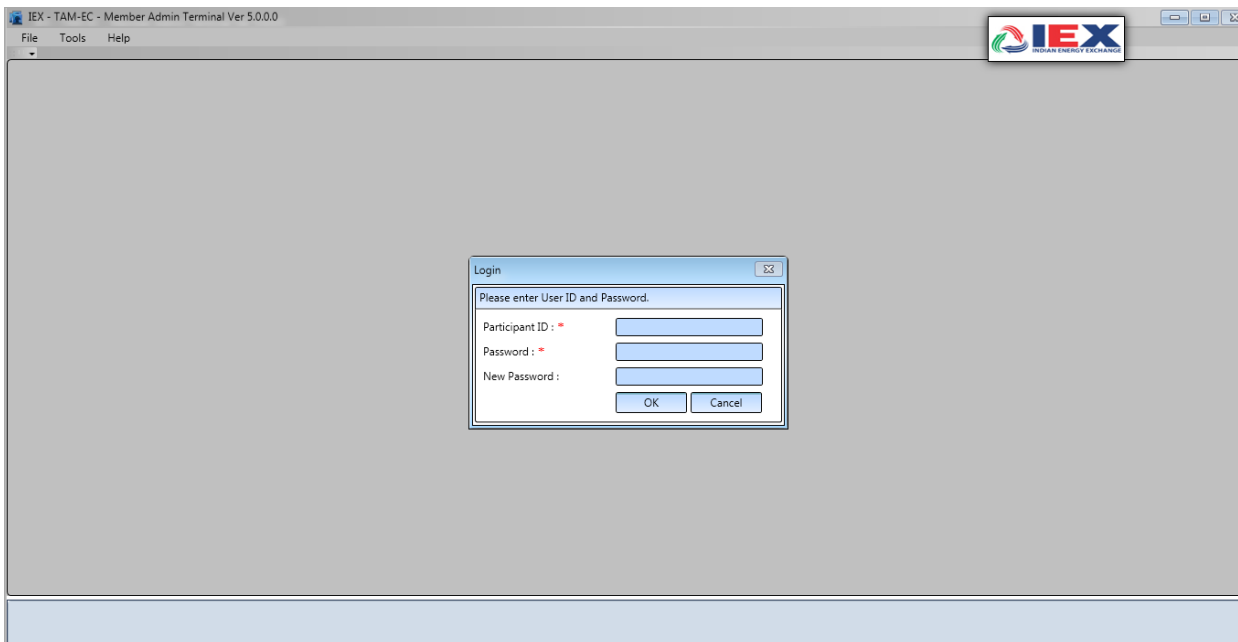
Click Next



**Step4:** click on next and finish button to complete installations.



**Step5:** For login MAT double click on your desktop shortcut '**IEX TAM-EC MAT Live**', It will ask below details, please enter your required details like 'User ID', 'Participant ID' & 'Password' which is used for live Trading.



**Step6:** Follow same steps for TWS installations, run 'SetupTWS' file which is downloaded from 'sftp'. & click on next. After successful installations on your desktop please run '**IEX TAM-EC TWS**' shortcut.

**Step 7:** Member will use existing TAM user id and password for Live.

**-End-**